

# Total variation regularization of geodetically and geologically constrained block models for the Western United States

Eileen L. Evans,<sup>1,\*</sup> John P. Loveless<sup>2</sup> and Brendan J. Meade<sup>1</sup>

<sup>1</sup>*Department of Earth & Planetary Sciences, Harvard University, 20 Oxford St., Cambridge, MA 02138, USA. E-mail: eevans@usgs.gov*

<sup>2</sup>*Department of Geosciences, Smith College, Northampton, MA 01063, USA*

Accepted 2015 April 14. Received 2015 April 13; in original form 2014 September 18

## SUMMARY

Geodetic observations of interseismic deformation in the Western United States provide constraints on microplate rotations, earthquake cycle processes, and slip partitioning across the Pacific–North America Plate boundary. These measurements may be interpreted using block models, in which the upper crust is divided into microplates bounded by faults that accumulate strain in a first-order approximation of earthquake cycle processes. The number and geometry of microplates are typically defined with boundaries representing a limited subset of the large number of potentially seismogenic faults. An alternative approach is to include a large number of potentially active faults bounding a dense array of microplates, and then algorithmically estimate the boundaries at which strain is localized. This approach is possible through the application of a total variation regularization (TVR) optimization algorithm, which simultaneously minimizes the  $L_2$  norm of data residuals and the  $L_1$  norm of the variation in the differential block motions. Applied to 3-D spherical block models, the TVR algorithm can be used to reduce the total variation between estimated rotation vectors, effectively grouping microplates that rotate together as larger blocks, and localizing fault slip on the boundaries of these larger block clusters. Here we develop a block model comprised of 137 microplates derived from published fault maps, and apply the TVR algorithm to identify the kinematically most important faults in the western United States. This approach reveals that of the 137 microplates considered, only 30 unique blocks are required to approximate deformation in the western United States at a residual level of  $<2 \text{ mm yr}^{-1}$ .

**Key words:** Plate motions; Kinematics of crustal and mantle deformation; North America.

## 1 INTRODUCTION

Understanding the geometric complexity of active fault systems has been an extant question since the advent of plate tectonics and is necessary for both quantitative seismic hazard assessment and understanding continental tectonics. Quantitative models of plate kinematics at global scales have included 12 (DeMets *et al.* 1990) to 19 (Sella *et al.* 2002) kinematically distinct plates, and phenomenological plate identifications have suggested at least 52 (Bird 2003). The primary challenge in developing global models that incorporate both plate-boundary scale ( $>1000 \text{ km}$ ) and regional scale ( $<1000 \text{ km}$ ) microplate and fault system geometries is uncertainty regarding the level of discretization necessary to explain the kinematics of active fault zones. Over the last 30 yr, Global Positioning System (GPS) observations have provided a quantitative description of nominally interseismic continental deformation with which to address this challenge and constrain plate boundary kinematics. However, elastic strain accumulation across locked faults produces smooth GPS velocity gradients (e.g. Savage & Burford 1973),

making it potentially challenging to identify the slip contribution of individual faults within a fault system without explicitly defining fault geometries and modelling interseismic earthquake cycle effects.

To address this potential ambiguity in model realizations of fault system geometry, kinematic descriptions of western United States tectonics were developed satisfying path integral constraints and slip rate observations from geology (Weldon & Humphreys 1986; Minster & Jordan 1987) and geodesy (Minster & Jordan 1987) to quantify the potential influence of poorly documented deformation sources. This kinematic consistency constraint has formed the foundation of block models (Matsu'ura *et al.* 1986; Bennett *et al.* 1996, 1997; Souter 1998; McClusky *et al.* 2001; Murray & Segall 2001; Becker *et al.* 2005; McCaffrey 2005; McCaffrey *et al.* 2007; Meade & Hager 2005; Johnson & Fukuda 2010; Spinler *et al.* 2010; Chuang & Johnson 2011; Hammond *et al.* 2011; Loveless & Meade 2011), in which the crust is divided into a discrete number of microplates bounded by mapped faults and combined with a first order approximation of quasi-static earthquake cycle deformation.

Assessing fault system complexity in a block model has often been approached through inspection (e.g. Meade & Hager 2005),

\* Now at: U.S. Geological Survey, Menlo Park, CA 94025, USA.

limiting analysis to faults with known geological fault slip rate estimates (Chuang & Johnson 2011), or by considering a small number of geometrically variable block model configurations (e.g. d’Alessio *et al.* 2005; Spinler *et al.* 2010). More recently, clustering algorithms have been applied to interseismic GPS velocities in the San Francisco Bay Area (Simpson & Thatcher 2012) and the eastern Mojave (Savage & Simpson 2013) to identify statistically distinct regions of block-like motion. Cluster analysis provides an algorithmic approach to block identification though it neglects earthquake cycle processes and is designed for cases where GPS observation coordinates are distant from the location of the Euler pole of the block on which they lie.

Here we develop block models containing a dense array of microplates with boundaries based on mapped fault traces in the western United States and apply a total variation regularization (TVR) optimization algorithm as a tool for block model selection. This quantized state vector estimation technique enables grouping of adjacent small microplates into fewer, larger blocks and identifies the kinematically most important block boundaries. In this way, we seek to algorithmically determine the simplest plate boundary block model (i.e. with the fewest blocks) that fits the data at a given level of resolution.

## 2 BLOCK MODELLING AND QUANTIZATION WITH TOTAL VARIATION REGULARIZATION

In the block model formulation of Meade & Loveless (2009), interseismic velocities are represented as a linear combination of block rotations and elastic strain accumulation due to slip deficit on block-bounding faults and spatially variable strain accumulation on triangular dislocation elements (TDEs, Meade 2007),

$$\mathbf{v}_I = \mathbf{v}_B + \mathbf{v}_E + \mathbf{v}_R, \quad (1)$$

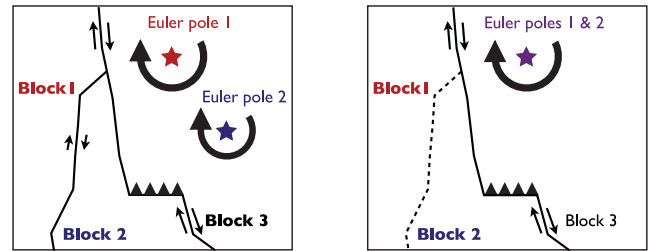
where  $\mathbf{v}_I$  are the interseismic velocities,  $\mathbf{v}_B$  are the velocities due to block rotation,  $\mathbf{v}_E$  are velocities due to a first order approximation of elastic earthquake cycle effects on locked faults and due to elastic strain accumulation on TDEs and  $\mathbf{v}_R$  are residual velocities due to model error and observational noise. Written in terms of block rotations and elastic strain accumulation, the forward problem is:

$$\mathbf{v}_I = [\mathbf{G}_B - \mathbf{G}_{SD}, \mathbf{G}_t] \begin{bmatrix} \boldsymbol{\Omega} \\ \mathbf{t} \end{bmatrix} + \mathbf{v}_R, \quad (2)$$

where  $\mathbf{G}_B$  contains the partial derivatives functions of velocity observations with respect to the block rotation vectors,  $\mathbf{G}_{SD}$  contains the integrated effects of Green’s functions associated with slip deficits on block-bounding faults,  $\mathbf{G}_t$  contains Green’s functions for slip deficit on triangular dislocation elements,  $\boldsymbol{\Omega}$  is the vector of block rotations and  $\mathbf{t}$  contains the slip deficit values on partially coupled triangular dislocation elements. In this formulation, all block-bounding faults, except those explicitly represented with triangular dislocation elements, are assumed to be fully locked and accumulating strain at the full estimated fault slip rate. For the commonly considered block model problem, the block motions and TDE strain accumulation rates are considered unknown and solved for in a least squares sense,

$$\mathbf{m}_{\text{est}} = (\mathbf{G}^T \mathbf{W} \mathbf{G})^{-1} \mathbf{G}^T \mathbf{W} \mathbf{d}, \quad (3)$$

where  $\mathbf{G} = [\mathbf{G}_B - \mathbf{G}_{SD}, \mathbf{G}_t]$ ,  $\mathbf{W}$  is a diagonal data weighting matrix containing the GPS data covariance matrix and triangular smoothing



**Figure 1.** Conceptual cartoon describing block grouping. Black lines represent faults with relative slip shown with black arrows. Coloured stars show Euler pole locations for Blocks 1 and 2. Left-hand panel: when Block 1 and Block 2 have different rotation vectors, there is some slip resolved on the fault bounding them. Right-hand panel: when Blocks 1 and 2 have an identical Euler pole location and rotation rate, slip on the fault bounding them goes to zero, and they effectively behave as a single larger block.

parameter  $\beta$ ,  $\mathbf{m}_{\text{est}} = [\boldsymbol{\Omega}_{\text{est}}, \mathbf{t}_{\text{est}}]'$  and  $\mathbf{d} = \mathbf{v}_I$  are interseismic velocities from annual to decadal scale GPS observations (Meade & Loveless 2009). The block models used here are constrained by horizontal motions only because a kinematically consistent block model formulation is not currently extended to vertical deformation.

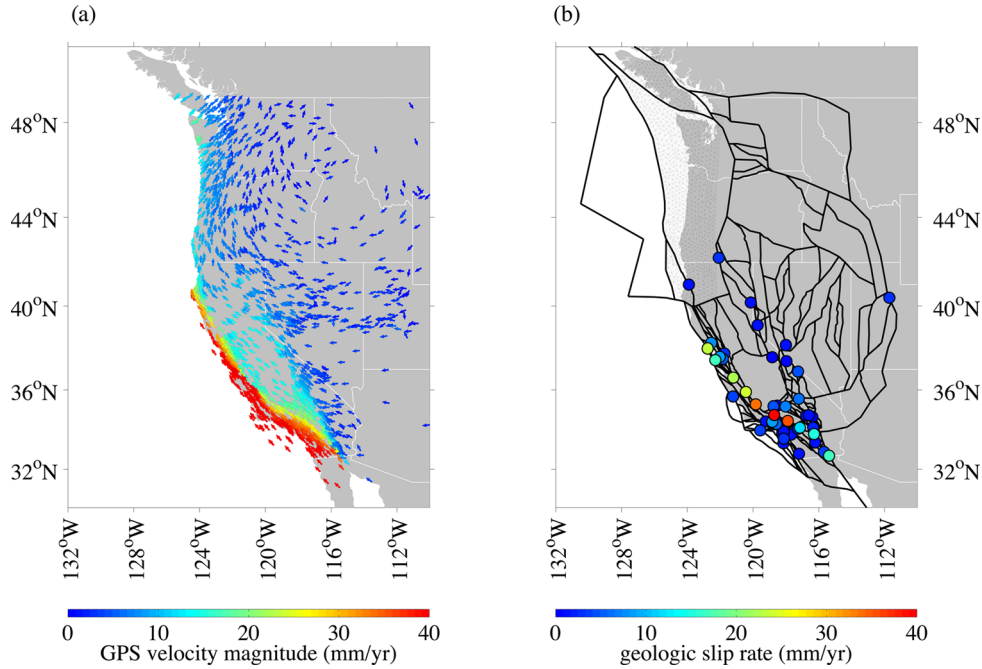
Within a system of rotating microplates, a fault bounding two blocks will be active (i.e. have a non-zero slip rate) when the blocks have different rotation vectors, whereas if two blocks have an identical Euler pole location and rotation rate, and the slip rate on the bounding fault will go to zero (Fig. 1). We may wish to find a solution in which many blocks have identical rotation vectors, that is, in which  $\boldsymbol{\Omega}$  is quantized. Estimating quantized rotation vector solutions provides a means for approaching ambiguity in block model selection: we may include all possible faults in a dense array of microplates, and then algorithmically estimate the boundaries at which strain is localized based on geodetic observations of interseismic deformation.

It is possible to estimate quantized solutions directly with a regularization technique developed for edge sharpening in image processing: TVR (Rudin *et al.* 1992; Chambolle 2004). TVR simultaneously minimizes the  $L_2$  norm of the data residuals and  $L_1$  norm of the variation in the estimated state vector. Applied to 3-D spherical block models, TVR minimizes the  $L_1$  norm of variation in the block rotation vectors, therefore localizing fault slip on the boundaries of these larger blocks,

$$\min \|\mathbf{W}^{\frac{1}{2}} (\mathbf{G}\boldsymbol{\Omega} - \mathbf{d})\|_2 + \lambda \|\mathbf{D}\boldsymbol{\Omega}\|_1, \quad (4)$$

where  $\lambda$  controls the strength of the regularization term, and  $\mathbf{D}$  is a linear differential operator. Construction of matrix  $\mathbf{D}$  is discussed at the end of this section.

Absolute value,  $L_1$ , regularization methods designed to recover sparse state vectors have been applied in reflection seismology for decades (e.g. Claerbout & Muir 1973; Santosa & Symes 1986; Yao *et al.* 2011), and recently applied to geodetic imaging of sharp coseismic slip distributions (Evans & Meade 2012). Under many circumstances, the  $L_1$  norm likely recovers the  $L_0$  pseudo-norm, which gives the number of non-zero elements in the vector of interest (Candès *et al.* 2006; Donoho 2006). Applied to earthquake slip distributions,  $L_1$  regularization minimizes the number of non-zero elements in the solution vector, and produces a compact representation of slip (Evans & Meade 2012). Applied to block models, applying the  $L_1$  norm to the vector  $\mathbf{D}\mathbf{m}$  limits the number of non-zero differences in the solution vector  $\mathbf{m}$ , resulting in a grouped or quantized solution. The  $L_1$  regularization is non-linear and a global minimum can be found using convex optimization methods (Boyd &



**Figure 2.** Block model input constraints (a) combined GPS velocity field in Western U.S. Velocity vectors are coloured by velocity magnitude. Velocities are relative to fixed North America (McCaffrey *et al.* 2007). (b) Input block geometries for 137 blocks with bounding faults shown in thick black lines. Subduction zone mesh in thin black lines. Geological slip rate constraints in coloured circles.

Vandenberghe 2004). Several solvers exist for variations of  $L_1$  regularization including TVR. We have modified a one-dimensional version of the TVreg package for Matlab (Boyd & Vandenberghe 2004; Jensen *et al.* 2012; <http://www.imm.dtu.dk/~pcha/Regutools/TVreg.m>) to accommodate arbitrary problem sizes and constraint matrix structure.

In terms of a block model, every three rows of  $\mathbf{D}$  correspond to a block constraint, and each column corresponds to a rotation vector component of a block:  $\mathbf{D}$  has dimensions of three times the number of constraints by three times the number of blocks. Each constraint limits differences in the rotation vector between two adjacent blocks. For example, if block  $i$  is adjacent to block  $j$ , we penalize models where the difference in the rotation vectors between these blocks,  $\mathbf{\Omega}_i - \mathbf{\Omega}_j$  is not zero. For each block, we calculate the difference between all geographically adjacent blocks by specifying separate rows in the difference matrix for each of the three components of the rotation vectors. For example, the constraint matrix,  $\mathbf{C}$ , for single pair of neighbouring blocks can be written as,

$$\mathbf{C} = \begin{bmatrix} \dots & 1 & 0 & 0 & \dots & -1 & 0 & 0 & \dots \\ \dots & 0 & 1 & 0 & \dots & 0 & -1 & 0 & \dots \\ \dots & 0 & 0 & 1 & \dots & 0 & 0 & -1 & \dots \end{bmatrix}. \quad (5)$$

Each of the constraint matrices,  $\mathbf{C}$ , for adjacent block pairs, are stacked to form difference matrix,  $\mathbf{D}$ .

### 3 GPS DATA, GEOLOGICAL SLIP RATES, AND BLOCK MODEL CONSTRUCTION

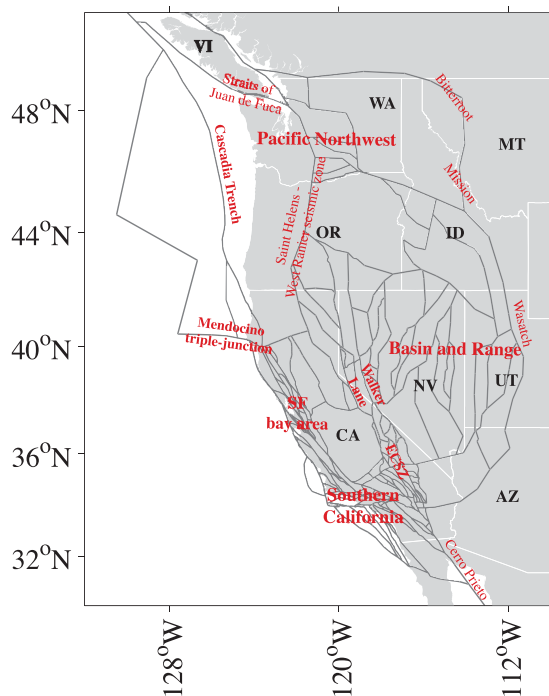
We constrain deformation in the western United States using horizontal interseismic velocities at 1686 locations (McClusky *et al.* 2001; Shen *et al.* 2003; Hammond & Thatcher 2005; Williams *et al.* 2006; McCaffrey *et al.* 2007; Loveless & Meade 2011; and the Plate Boundary Observatory Network velocity field,

<http://pboweb.unavco.org>; Fig. 2a). These velocity fields are combined into a common reference frame by minimizing velocity misfit between collocated stations in the fields, using a six-parameter (three-component rotation and three-component translation) transformation (Loveless & Meade 2011, GSA Data Repository item 2011305). As discussed in Section 2, we focus our analysis on horizontal GPS velocities. We have omitted velocities north of the Canadian border because we do not model potentially complex deformation in western Canada or along the Aleutian trench, and velocities near Yellowstone that contain contributions from non-tectonic deformation.

We additionally constrain western United States tectonics with 48 geological slip rate estimates (Fig. 2b, Table S1). These observations are selected from the catalogue compiled by Dawson & Weldon (2013), and we include three slip rates on faults outside of California on the Annie Spring fault (Bacon *et al.* 1999), the Petrified Springs fault (Wesnousky 2005) and the Wasatch fault (Jewell & Bruhn 2013). We have considered only geological rates  $>1 \text{ mm yr}^{-1}$ . To additionally account for epistemic uncertainties in the geological rates that may not be incorporated in the reported rates (e.g. Bird 2007; Gold *et al.* 2009; Zechar & Frankel 2009), we expand the uncertainty magnitudes to be at least 50 percent each respective reported rate. Where a single fault has multiple geological slip rate estimates associated with it, we select a single published rate to avoid ambiguities in combining palaeoseismic uncertainties (e.g. McQuarrie & Wernicke 2005). The rates, reported uncertainties, applied uncertainties, and sources for the geological slip rates are provided in Table S1.

In the block model, we incorporate geological slip rates as *a priori* slip rate observations (Meade & Loveless 2009), which modifies the components of eq. (3) such that:

$$\mathbf{G} = \begin{bmatrix} \mathbf{G}_B - \mathbf{G}_{SD} & \mathbf{G}_t \\ \mathbf{G}_{ap} & 0 \end{bmatrix}, \quad \mathbf{d} = \begin{bmatrix} \mathbf{v}_{GPS} \\ \mathbf{s}_{ap} \end{bmatrix}, \quad (6)$$



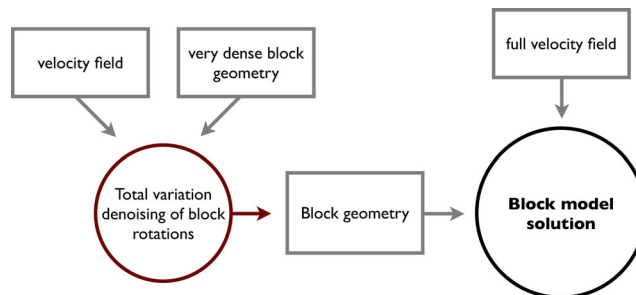
**Figure 3.** Input blocks with for original 137 block model (dark lines show initial block boundaries), with select regions labelled. State abbreviations in black, AZ, Arizona; CA, California; ID, Idaho; MT, Montana; NV, Nevada; OR, Oregon; UT, Utah; WA, Washington (and VI, Vancouver Island).

where  $\mathbf{G}_{ap}$  contains the partial derivative functions of the *a priori* rates with respect to the block rotation vectors, and vector  $\mathbf{s}_{ap}$  contains the *a priori* geological slip rate observations. In this modification, the data-weighting matrix  $\mathbf{W}$  contains additional diagonal terms describing the relative weighing of the geological slip rates relative to the GPS velocities (Meade & Loveless 2009, eq. 13). We construct  $\mathbf{W}$  such that the total influence of the geological slip observations are down-weighted relative to the geodetic velocity observations by a factor of 10.

We develop a block model comprised of 137 microplates based on Quaternary fault maps (Jennings 1994; U.S. Geological Survey *et al.* 2006; Figs 2b and 3). Similar to other block modelling studies, all locking depths on block bounding faults are assumed to be 15 km (e.g. Meade & Hager 2005; Johnson 2013). We have incorporated two exceptions in which we model creeping faults with a locking depth of 0 km: on the Hayward fault in the east San Francisco Bay Area and on the creeping segment of the central San Andreas fault.

We divide the block modelling procedure into two steps: (1) we use TVR to reduce the number of uniquely rotating blocks based on the GPS observations and geological slip rate constraints. The grouped blocks define the block geometry to be used in modelling deformation in the western United States. Faults bounding these larger blocks are considered active, and the zero-slip-rate interior faults are removed from the block model geometry. In this step, we use a modified velocity field with a previously estimated elastic contribution due to Cascadia subduction (Loveless & Meade 2011) removed, so that the resulting velocity field may be attributed exclusively to block rotations and earthquake cycle processes on block-bounding faults.

In step (2), we use the block geometry selected by step (1) for a full block model solution constrained by the full velocity field and geological slip rate constrains on the selected fault geometry with



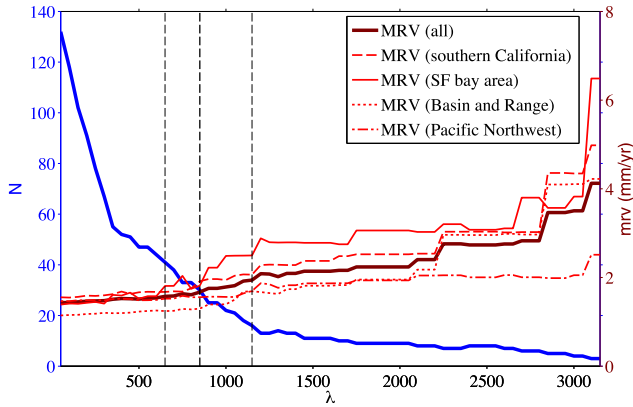
**Figure 4.** Flowchart outlining workflow for TVDN model selection and block model estimation. We use TVDN as a method of block geometry selection based on original dense block geometry and a modified velocity field (modified to remove the elastic signal due to coupling on the Cascadia subduction zone). The selected block geometry is then fed into the full block model using the full velocity field to estimate block rotation, fault slip rates, and coupling on the subduction zone.

a traditional block model (eq. 1) using a weighted least squares estimator (eq. 3) to estimate block rotations, fault slip rates, and spatially variable slip on triangular dislocation elements representing the Cascadia subduction zone (McCrory *et al.* 2009; Fig. 2b). For simplicity, we identify a single smoothing parameter  $\beta = 1000$  for the subduction zone, which we apply to all models considered here, although this may be varied as well to obtain desired smoothness and goodness of fit properties of the subduction zone solution. For the full block model inversion we assume *a priori* rotation constraints on the motion of the Juan de Fuca plate due to a lack of direct GPS observations [Euler pole location  $-26.6 \pm 0.1^\circ\text{N}$ ,  $69.6 \pm 0.1^\circ\text{E}$ , and rotation rate  $0.810 \pm 0.001 \text{ deg Myr}^{-1}$  (Miller *et al.* 2001)]. This procedure is outlined in the flowchart in Fig. 4.

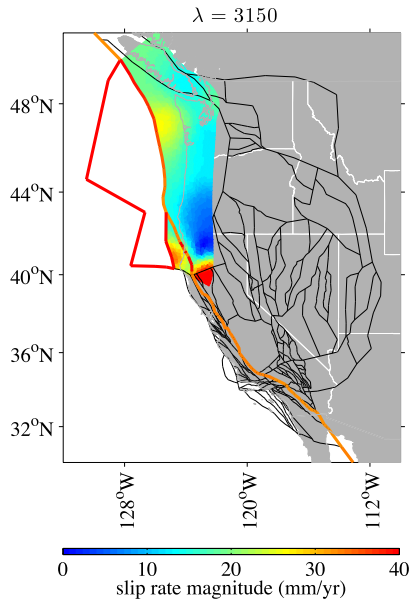
#### 4 QUANTIZED BLOCK MODEL RESULTS

Total variation regularization reduces the effective number of blocks directly by simultaneously estimating a set of block rotations that are quantized. The parameter  $\lambda$  controls the strength of the regularization such that increasing  $\lambda$  reduces the number of unique rotation vectors (i.e. the number of kinematically distinct blocks). Very small values of  $\lambda$  do not reduce the total number of independently rotating blocks. For large values of  $\lambda$ , model fit to the GPS observations is outweighed by the total variation constraint, resulting in models with very few independently rotating blocks, and therefore very few active faults. We consider block model solutions for  $\lambda$  ranging from  $\lambda = 50$  to 3150, which incrementally reduces the total number of blocks in the plate boundary from 137 to 3, while data misfit, quantified in terms of mean residual velocity (MRV), increases from 1.4 to 4.1  $\text{mm yr}^{-1}$  (Fig. 5). We also track regional MRV in southern California, the San Francisco Bay Area, the Basin and Range and the Pacific Northwest. Vertical dashed lines in Fig. 5 identify  $\lambda$  values of models that we discuss in this section.

As a benchmark and end-member, we first consider the  $\lambda = 3150$  model, in which the plate boundary is made up of only three blocks: a Pacific block, a North America block, and a Juan de Fuca block (Fig. 6). In this extreme case, the best-fitting boundary between the Pacific and North American blocks follows the San Andreas fault for much of its mapped trace between the Cerro Prieto fault in Mexico and the central San Andreas fault, with one exception. South of  $34.2^\circ\text{N}$  in southern California, slip follows the San Jacinto fault west of the San Andreas fault, reconnecting with the Imperial fault south of  $33^\circ\text{N}$ . North of the central San Andreas



**Figure 5.** Solution behaviour for values of  $\lambda$ . As  $\lambda$  increases, the number of unique Euler poles ( $N$ ) decreases (blue line), and the mean residual velocity (MRV) increases (dark red line). Regional MRV for southern California (light red dashed line) follows the overall plate boundary MRV, while the regional MRV for the San Francisco Bay Area (light red solid line) is consistently larger. Dashed black lines identify  $\lambda$  values of models that we discuss in Section 4:  $\lambda = 650$ , reference model  $\lambda = 850$  and  $\lambda = 1150$ . Regional mean residual velocities are calculated on the area shown in Figs 9–15.



**Figure 6.** Slip rates and spatially variable coupling on the Cascadia subduction zone for end-member solution with three plate boundary blocks,  $\lambda = 3150$ . Coloured faults are faults that have been selected by the TVR algorithm as active and are included in the block model solution for  $\lambda = 3150$ . Black faults were not selected and are not included in the block model solution. In this case, the primary plate boundary is located along the San Andreas fault in southern California.

fault, slip on the boundary steps east onto the Valley Margin fault, and follows the Greenville and Bartlett Springs faults, eventually merging with the Cascadia trench offshore of southern Oregon  $\sim 400$  km north of the Mendocino triple junction. Slip rates on this end-member plate boundary are 28–33  $\text{mm yr}^{-1}$ , and fit the data poorly, with a  $\text{MRV} = 4.1 \text{ mm yr}^{-1}$  (Fig. S1). Regional misfits in Southern California, the San Francisco Bay Area, and the Basin and Range are higher, with local MRVs of 4.9, 6.5 and 4.2  $\text{mm yr}^{-1}$ , respectively.

In this end-member case, slip on the Cascadia subduction zone accommodates strain that would otherwise be accommodated by faults in the northwest United States and in the Basin and Range. This is most apparent in a very high slip patch slipping at  $>40 \text{ mm yr}^{-1}$  of normal-sense slip at the southern end of the Cascadia subduction zone (Fig. 6).

## 4.2 Reference and comparison models

We select a reference model of  $\lambda = 850$  that contains 30 blocks, and explains GPS observations with a MRV of 1.7  $\text{mm yr}^{-1}$ . Of the models considered,  $\lambda = 850$  is the largest  $\lambda$  value for all regional MRVs are less than 2  $\text{mm yr}^{-1}$ , with San Francisco Bay Area MRV = 1.8  $\text{mm yr}^{-1}$ , Southern California MRV = 1.9  $\text{mm yr}^{-1}$ , Basin and Range MRV = 1.2  $\text{mm yr}^{-1}$ , Pacific Northwest MRV = 1.6  $\text{mm yr}^{-1}$  and overall MRV = 1.7  $\text{mm yr}^{-1}$  (Fig. 7). To demonstrate the range of possible fault geometries and slip rate estimates, we additionally consider a less quantized model with  $\lambda = 650$ , containing 41 blocks for an MRV of 1.6  $\text{mm yr}^{-1}$  (Fig. 7a); and a more quantized model  $\lambda = 1150$  (the largest  $\lambda$  value to fit GPS velocities with  $\text{MRV} < 2 \text{ mm yr}^{-1}$ ) containing only 16 blocks, and with an MRV of 1.9  $\text{mm yr}^{-1}$  (Fig. 7c).

In general, the  $\lambda = 650$  model produces lower slip rates (on more faults) than the  $\lambda = 850$  reference model, and  $\lambda = 1150$  model produces higher slip rates (on fewer faults). The residual velocity fields for the reference and comparison models do not contain large-scale systematic orientations or magnitude (Fig. 8), with consistently smaller residuals in the  $\lambda = 650$  model and the highest residuals in the  $\lambda = 1150$  model. Among all the models, the highest residuals occur along the southern and central San Andreas fault (especially in the  $\lambda = 850$  and 1150 models), northern California near the Oregon border, and Walker Lane (especially in the  $\lambda = 1150$  model). Residuals are consistently low ( $<2 \text{ mm yr}^{-1}$ ) adjacent to the Cascadia subduction zone.

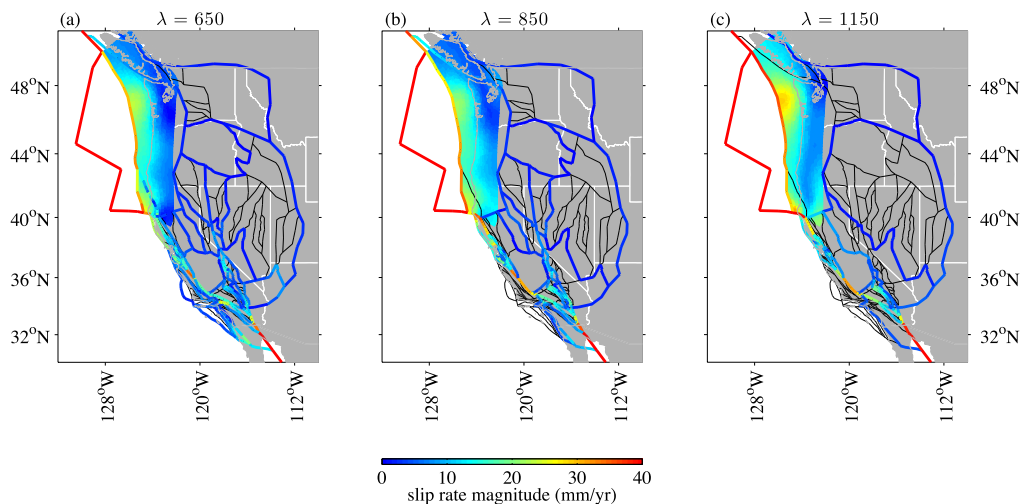
The block model formulation produces uncertainty estimates on fault slip rates estimated formally for a given block geometry. These uncertainties therefore do not reflect uncertainties in block and segment geometry, and are therefore much smaller than differences in slip rate on a given fault between the models considered here. Because of this, when reporting model slip rates for a given block geometry, we do not report the formal uncertainties as reported by the block model.

For purposes of this discussion, we focus primarily on the strike-slip component of fault slip rates, especially on the westernmost edge of the plate boundary in California; and discuss specific examples of dip-slip and tensile deformation along the Cascadia subduction zone and in the Basin and Range.

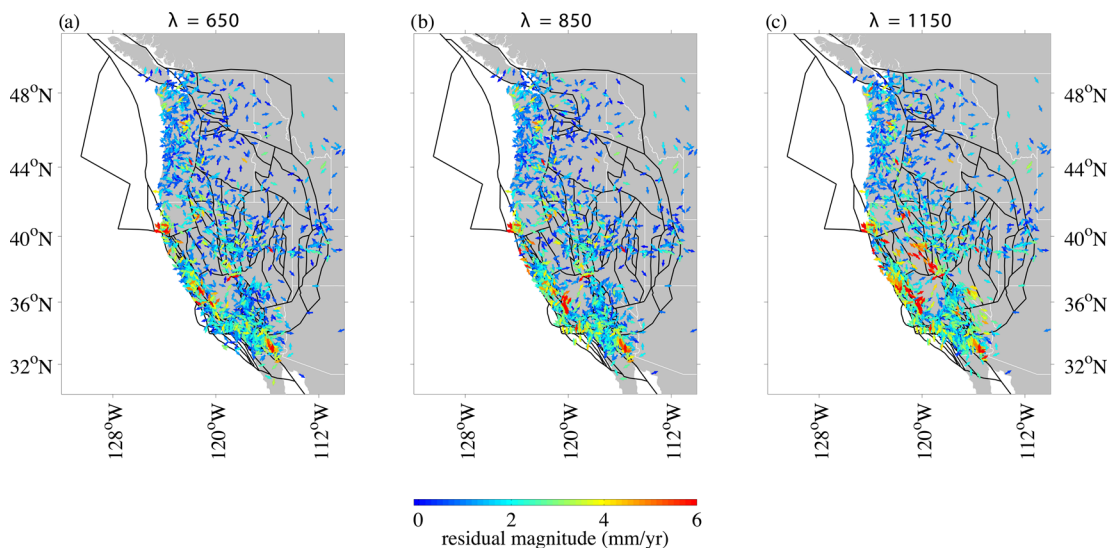
### 4.2.1 Southern California

Between the reference and comparison models, we identify 7–16 rotating blocks in southern California, with 11 blocks in the  $\lambda = 850$  reference model (Fig. 9). The reference model ( $\lambda = 850$ ) fits GPS observations in southern California with a MRV of 1.7  $\text{mm yr}^{-1}$ , compared with 1.7  $\text{mm yr}^{-1}$  ( $\lambda = 650$ ) and 2.1  $\text{mm yr}^{-1}$  ( $\lambda = 1150$ ). This survey of the block model selection results in southern California begins in the eastern California shear zone and progresses west to the offshore Borderlands faults (Fig. 10).

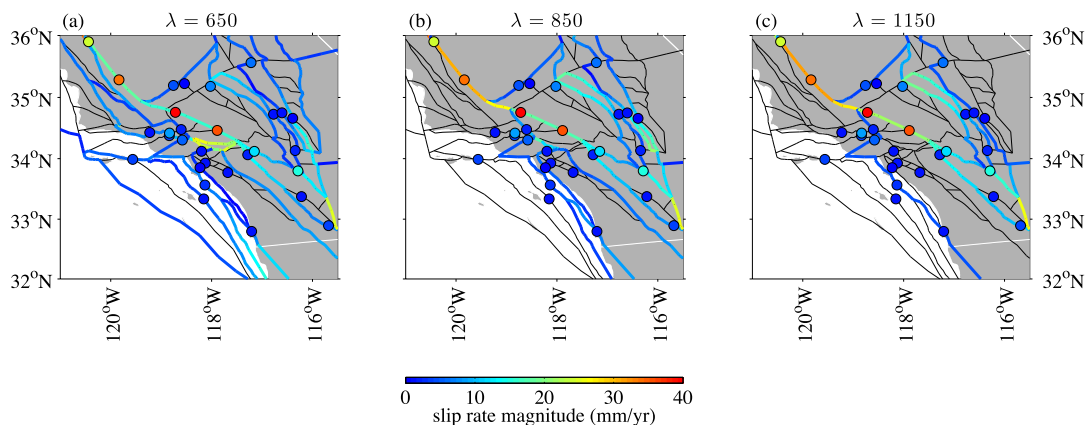
The eastern California shear zone (ECSZ) accommodates significant combined right lateral slip of  $>13 \text{ mm yr}^{-1}$  into the westernmost Basin and Range along the Lockhart/Lenwood fault, the



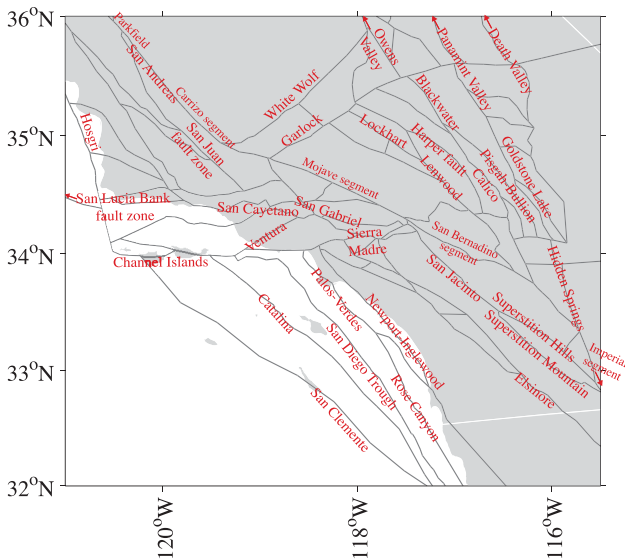
**Figure 7.** Slip rates and spatially variable coupling on the Cascadia subduction zone for (a)  $\lambda = 650$ , (b)  $\lambda = 850$ , (c)  $\lambda = 1150$ . Coloured faults are faults that have been selected by the TVR algorithm as active and are included in the block model solution for each  $\lambda$  value. Black faults were not selected and are not included in the block model solution.



**Figure 8.** Residual velocities for (a)  $\lambda = 650$ , (b)  $\lambda = 850$ , (c)  $\lambda = 1150$ . Residual velocity vectors are coloured by residual velocity magnitude.



**Figure 9.** Slip rates and in southern California for (a)  $\lambda = 650$ , (b)  $\lambda = 850$ , (c)  $\lambda = 1150$ . Coloured faults are faults that have been selected by the TVR algorithm as active and are included in each block model solution. Black faults were not selected and are not included in the block model solution. Geological slip rate constraints in coloured circles.



**Figure 10.** Input blocks in southern California (dark lines show initial block boundaries), with selected fault labels.

Harper fault zone, the Blackwater/Calico fault, and the Goldstone Lake fault. In the reference model,  $12 \text{ mm yr}^{-1}$  of right lateral slip is fed into the ECSZ by the Hidden Springs fault (Jennings 1994). This structure is  $\sim 30 \text{ km}$  east of the Eureka Peak and Burnt Mountain faults, which have been suggested as candidates for bringing slip from the southern San Andreas fault into the ECSZ (Meade & Hager 2005; Spinler *et al.* 2010; Loveless & Meade 2011). To the north, ECSZ slip localizes on the Owens Valley and Panamint Valley faults, and the Death Valley fault is selected only in the  $\lambda = 650$  model (Fig. 9a).

The resulting block geometries in the reference and comparison models contain thin oblong north–south-oriented blocks that span the length of the ECSZ. Estimated strike-slip rates reach up to  $13 \text{ mm yr}^{-1}$ , consistent with previous geodetic studies (Gan *et al.* 2000; McClusky *et al.* 2001; Peltzer *et al.* 2001; Savage *et al.* 2001; Meade & Hager 2005), but higher than geological rates (e.g. Oskin & Iriondo 2004; Oskin *et al.* 2007; Oskin *et al.* 2008). At  $\lambda = 850$ , deformation in the ECSZ is localized on four of seven possible structures, and slip is not distributed evenly between them (Fig. 9b). Our results are consistent with previous results in which ECSZ slip is distributed across a small number of faults (McClusky *et al.* 2001; Meade & Hager 2005). In the  $\lambda = 650$  reference model, only one additional fault is active to the east, suggesting that adding additional faults to approximate continuous deformation may not be necessary to describe ECSZ motion (e.g. Peltzer *et al.* 2001; Chuang & Johnson 2011; Fig. 9a). However unlike Peltzer *et al.* (2001), we do estimate more than a single fault in the eastern Mojave.

In the reference model, we estimate  $1\text{--}5 \text{ mm yr}^{-1}$  of right lateral slip on most of the Blackwater fault, increasing to  $10 \text{ mm yr}^{-1}$  in the south (Fig. 9b). This range is consistent with the  $\sim 7 \text{ mm yr}^{-1}$  of right lateral slip estimated by Peltzer *et al.* (2001). East of the Blackwater fault, we estimate  $3\text{--}8 \text{ mm yr}^{-1}$  of right lateral slip Goldstone fault, which is the easternmost active ECSZ fault in the reference model. Immediately west of the Blackwater fault, we estimate  $5 \text{ mm yr}^{-1}$  of right-lateral slip on the Harper fault zone. The next active faults to the east are the Lenwood/Lockhart faults, slipping right laterally at  $\sim 6 \text{ mm yr}^{-1}$ . We do not estimate any fault activity between the Lockhart and Lenwood faults and the southern San Andreas fault. Among the reference and comparison models, slip rates in the ECSZ

vary within an order of magnitude, often with short-wavelength slip rate variations within a single model. This is apparent in all three models on Lenwood and Harper faults, which have high slip rates ( $>15 \text{ mm yr}^{-1}$ ) in the north near the intersection with the Garlock fault but low slip rates ( $<10 \text{ mm yr}^{-1}$ ) in the south (Fig. 9).

None of the models considered contain an active Garlock fault along its entire  $\sim 200 \text{ km}$  length (Fig. 9). Estimated slip rates on the Garlock fault are largely heterogeneous, reaching a local maximum near  $118^\circ \text{ W}$  of  $12\text{--}18 \text{ mm yr}^{-1}$  left lateral slip ( $17 \text{ mm yr}^{-1}$  in the reference model). East of the intersection with the Blackwater fault, slip rates on the active segments of the Garlock fault do not exceed  $3 \text{ mm yr}^{-1}$ . Instead the reference and comparison models all contain a fully active left-lateral White Wolf fault (e.g. Bawden *et al.* 1997).

We estimate an active southern San Andreas fault along its entire trace with the fastest San Andreas rates on the Cerro Prieto fault in northern Mexico of  $41 \text{ mm yr}^{-1}$ . In the reference and  $\lambda = 650$  models,  $5\text{--}8 \text{ mm yr}^{-1}$  of slip is transferred westward along the Elsinore fault. We estimate  $9 \text{ mm yr}^{-1}$  on the San Jacinto in the reference model, and up to  $11 \text{ mm yr}^{-1}$  in the  $\lambda = 1150$  model (Fig. 9). In all three models slip follows Superstition Mountain section but not the Superstition Hills section. These San Jacinto rates are consistent with geodetic studies estimating  $12 \text{ mm yr}^{-1}$  (Lisowski *et al.* 1991; Lindsey *et al.* 2013), and considerably lower than the  $25 \text{ mm yr}^{-1}$  slip rate estimated by Lundgren *et al.* (2009) (who estimated  $\sim 17 \text{ mm yr}^{-1}$  on the San Andreas), and to Fialko's (2006) estimate of  $19\text{--}20 \text{ mm yr}^{-1}$ .

North of the juncture with the San Jacinto, slip on the Imperial segment of the San Andreas fault is  $22\text{--}24 \text{ mm yr}^{-1}$ , decreasing to  $10\text{--}14 \text{ mm yr}^{-1}$  along the Indio segment. The San Andreas fault exhibits a local minimum along the San Bernardino segment, with rates as low as  $5 \text{ mm yr}^{-1}$  in all three models. North of merging again with San Jacinto at  $34.2^\circ \text{ N}$ , in the reference model we estimate  $17 \text{ mm yr}^{-1}$  along the Mojave segment and  $31 \text{ mm yr}^{-1}$  along the Carrizo segment (Fig. 9).

West of the San Andreas fault and offshore, the Agua Blanca fault in northern Baja California feeds as much as  $12 \text{ mm yr}^{-1}$  of slip into borderlands and offshore faults (Fig. 9). In the reference model, the Palos Verdes fault, and the Newport/Inglewood fault zone are active at  $0.5\text{--}5 \text{ mm yr}^{-1}$ . We estimate  $4.2 \text{ mm yr}^{-1}$  of right lateral slip on the Palos Verdes fault, which is consistent with the geologically constrained rate of  $4 \text{ mm yr}^{-1}$  (Brankman & Shaw 2009). In the Los Angeles basin, the reference model contains an active Newport/Inglewood fault and Compton thrust with up to  $6.5 \text{ mm yr}^{-1}$  of convergence. This slip rate may be consistent with the combined influence of actively uplifting Compton thrust (Leon *et al.* 2009), the Puente Hills blind thrust (Leon *et al.* 2007) and the Elysian Park thrust (Davis *et al.* 1989). In the  $\lambda = 650$  model, slip is distributed across additional offshore faults: the San Diego trough fault zone and the San Clemente fault with right lateral slip rates of  $2$  and  $4 \text{ mm yr}^{-1}$ , respectively. In contrast, the  $\lambda = 1150$  model has only one active structure in southern California west of the San Andreas fault consisting of the Rose Canyon-Palos Verdes faults with a strike-slip rate  $4.4 \text{ mm yr}^{-1}$  (Fig. 9c).

North of the Los Angeles basin, the reference model identifies  $5 \text{ mm yr}^{-1}$  of right lateral slip on the Malibu Coast fault, and  $3 \text{ mm yr}^{-1}$  of extension on the Ventura fault (Fig. 9b). Extension in the Ventura region is surprising given recent observations of uplift (Hubbard *et al.* 2014). We estimate localized shortening of up to  $12 \text{ mm yr}^{-1}$  on the San Gabriel fault, which extends north from the Sierra Madre fault. This shortening is more complicated in the  $\lambda = 650$  model, in which both the southern San Gabriel fault

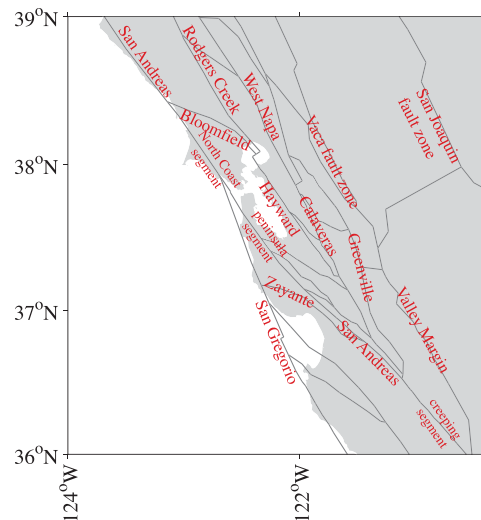
and the Sierra Madre fault are active with up to  $20 \text{ mm yr}^{-1}$  of oblique convergence on the San Gabriel fault immediately adjacent to the same magnitude of oblique extension on the Sierra Madre fault (Fig. 9a). These high rates and short wavelength variations are physically unlikely, suggesting that in this  $\lambda = 650$  case, the total variation constraint is not strong enough to avoid over fitting the GPS data.

In the reference model at latitude  $35\text{--}36^\circ \text{N}$  adjacent to the central San Andreas fault, the reference model and  $\lambda = 1150$  models contain no active subparallel structures west of the San Andreas fault (Fig. 9). The  $\lambda = 650$  model does contain active San Juan and Rinconada fault zones immediately to the east of the San Andreas, as well as an active offshore San Lucia Bank fault zone (slipping  $8$ ,  $6$  and  $1 \text{ mm yr}^{-1}$ , respectively; Fig. 9a). This fault geometry leads to high block rotations east of Parkfield, with extension rates on the west branch of the San Juan fault zone of up to  $23 \text{ mm yr}^{-1}$  immediately adjacent to convergence rates of  $22 \text{ mm yr}^{-1}$  on the east branch, again indicating over fitting in the  $\lambda = 650$  model. North of the Carrizo segment, we estimate  $31 \text{ mm yr}^{-1}$  at Parkfield, consistent with previous geodetic estimates (e.g. Murray & Langbein 2006), and slightly faster than the geological estimate of  $24.8 \text{ mm yr}^{-1}$  (Toké *et al.* 2011). Slip splits north of Parkfield with  $33 \text{ mm yr}^{-1}$  on San Andreas fault and  $3 \text{ mm yr}^{-1}$  of left-lateral slip on a subparallel structure to the east, the Valley Margin fault (d'Alessio *et al.* 2005).

Whereas the  $\lambda = 650$  constraint appears to over fit GPS observations, the total variation constraint at  $\lambda = 1150$  is likely too large to effectively reproduce the geodetic data in some areas. For example, none of the offshore faults are active, leading to high residual velocities offshore of  $>3 \text{ mm yr}^{-1}$  (Fig. 8). While individual geometries and slip rates in the comparison models may not capture all southern California deformation, southern California tectonics appear to be best described by the rotation of more than 7 but fewer than 20 rotating blocks.

#### 4.2.2 San Francisco Bay Area

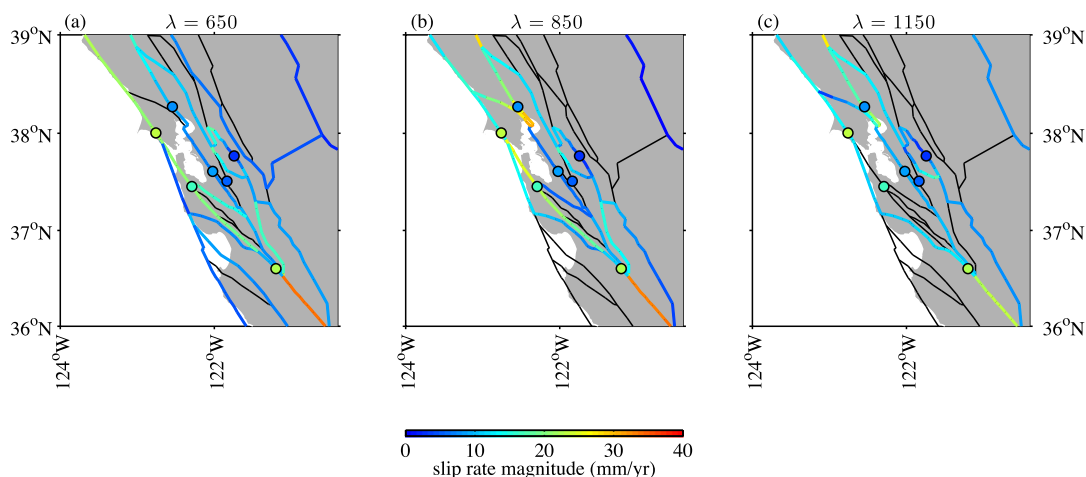
In the reference model ( $\lambda = 850$ ) and comparison models ( $\lambda = 650$ ,  $\lambda = 1150$ ), slip in the San Francisco Bay Area is partitioned across four to seven closely spaced active faults, with six major faults bounding five rotating blocks in the reference model (Fig. 11). The



**Figure 12.** Input blocks in San Francisco Bay Area (dark lines show initial block boundaries), with selected fault labels.

reference model fits the regional Bay Area GPS observations with  $\text{MRV} = 1.8 \text{ mm yr}^{-1}$ . This is relative to a regional  $\text{MRV} = 1.8$  ( $\lambda = 650$ ) and  $\text{MRV} = 2.5$  ( $\lambda = 1150$ ) in the comparison models. Active faults include the San Andreas fault, the San Gregorio fault, the Hayward fault, the northern Calaveras and West Napa faults, and the Greenville fault. East of the southern Greenville fault, we include an active structure that was also included in the model of d'Alessio *et al.* (2005) as the Valley Margin fault (Fig. 12). Active structures are consistent between the reference and comparison models, although the  $\lambda = 650$  model contains an additional fault east of the Greenville fault, and the  $\lambda = 1150$  model does not include an active peninsula segment of the San Andreas fault (Fig. 11).

There is considerable variation in slip rates between the reference and comparison models, in particular in the western Bay Area. In the comparison models, the Zayante fault transfers  $3.5\text{--}10 \text{ mm yr}^{-1}$  of right lateral slip from the central San Andreas fault across the Santa Cruz mountains to the San Gregorio fault in the southwest Bay Area (Figs 11a and c). The reference model, however, estimates



**Figure 11.** Slip rates and spatially variable coupling in San Francisco Bay Area for (a)  $\lambda = 650$ , (b)  $\lambda = 850$ , (c)  $\lambda = 1150$ . Coloured faults are faults that have been selected by the TVR algorithm as active and are included in each block model solution. Black faults were not selected and are not included in the block model solution. Geological slip rate constraints in coloured circles.



left-lateral slip rates on the Zayante fault of  $5 \text{ mm yr}^{-1}$ , which then connects to an  $11 \text{ mm yr}^{-1}$  left-lateral San Gregorio fault (Fig. 11b). Adjacent to the San Gregorio fault in the reference model, we estimate  $23 \text{ mm yr}^{-1}$  of right lateral slip on the peninsula segment of the San Andreas fault, but this segment is not active at all in the  $\lambda = 1150$  model. Previous block models of the San Francisco Bay Area have not included the Zayante fault (d'Alessio *et al.* 2005; Evans *et al.* 2012), and its presence in the comparison models may be interpreted as consistent with active interseismic strain accumulation near the epicentre of the 1989 Loma Prieta earthquake (e.g. Shaw *et al.* 1994), although in this study its behaviour appears to be poorly constrained.

In the East Bay, we allow the Hayward fault to creep at its full estimated rate in all of the models by setting its locking depth to zero. Our slip rates estimated on the Hayward fault are  $6\text{--}9 \text{ mm yr}^{-1}$ , with  $6.2 \text{ mm yr}^{-1}$  in the reference model, similar to estimates from studies allowing partial creep (e.g. Bürgmann *et al.* 2000; d'Alessio *et al.* 2005; Schmidt *et al.* 2005; Evans *et al.* 2012). In the reference model, the southern Calaveras fault transfers  $9\text{--}10 \text{ mm yr}^{-1}$  of slip from the creeping segment of the San Andreas to the southern Hayward fault, which then splits between the  $6 \text{ mm yr}^{-1}$  Hayward fault and a  $5 \text{ mm yr}^{-1}$  fault cutting across the south bay to reconnect with the peninsula segment of the San Andreas fault (Fig. 11b). The Hayward fault extends to the Rodgers Creek fault to the north, slipping up to  $17 \text{ mm yr}^{-1}$ , and to the Bloomfield fault slipping  $4 \text{ mm yr}^{-1}$ . The Bloomfield fault connects the Hayward to the northern San Andreas fault. However, fault behaviour in the northern San Francisco Bay Area is variable among the models considered. The Bloomfield fault is inactive in the  $\lambda = 650$  model, but active in the reference and  $\lambda = 1150$  models, in which the Hayward–Bloomfield–Rodgers Creek triple-junction accommodates up to  $30 \text{ mm yr}^{-1}$  of extension and compression on adjacent fault segments (Fig. 11).

East of the Hayward fault, the southern Greenville fault transfers slip from the central San Andreas fault, linking up with the northern Calaveras. In the reference model and  $\lambda = 650$  model, the Valley Margin fault slips left-laterally at  $\sim 5 \text{ mm yr}^{-1}$  eventually connect-

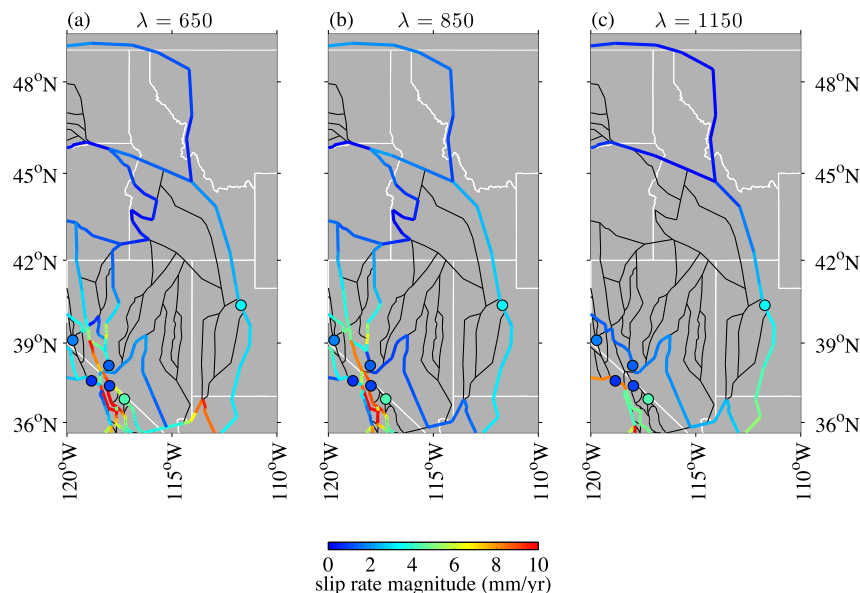
ing with the Greenville fault, although this fault remains right lateral in the  $\lambda = 1150$  model (Fig. 11). At the intersection between the Greenville and northern Calaveras faults, rather than transferring slip directly, the Greenville and northern Calaveras faults bound a small block in the easternmost Bay Area (Fig. 11) in all three of the models considered. We estimate a slip rate on the northern Calaveras fault of  $10 \text{ mm yr}^{-1}$ , faster than the geological slip rate estimate of  $5.6 \text{ mm yr}^{-1}$  (Simpson *et al.* 1999), and geodetic estimates of  $6.2\text{--}9.0 \text{ mm yr}^{-1}$  (d'Alessio *et al.* 2005; Evans *et al.* 2012). Calaveras slip rate is transferred to the West Napa fault to its north, which slips  $8\text{--}10 \text{ mm yr}^{-1}$  in all of the models ( $10 \text{ mm yr}^{-1}$  in the  $\lambda = 850$  reference model), and was the location of the recent  $M_W = 6.0$  South Napa earthquake (U.S. Geological Survey, [earthquake.usgs.gov](http://earthquake.usgs.gov)).

While there is considerable variability in fault geometry and slip rates, the reference and comparison models appear to constrain complexity of the Bay Area fault system as best described by 4–7 rotating blocks.

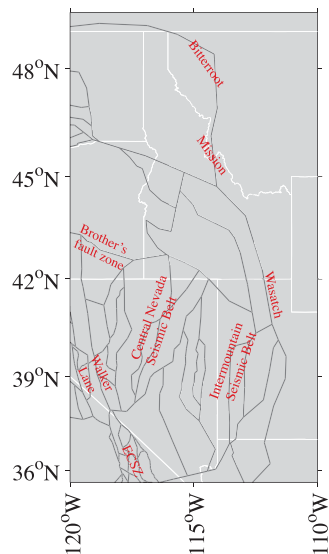
#### 4.2.3 Basin and Range and Walker Lane

Slip is partitioned through the Basin and Range province similarly among the reference and comparison models. In the reference model ( $\lambda = 850$ ), slip is bounded on the west side of the province by several faults in the eastern California shear zone and up through the Walker Lane belt (Stewart 1988), and on the east by the Wasatch fault (Figs 13 and 14). A fault following the Central Nevada seismic belt (Wallace 1984a) remains active in the western portion of the interior of the province, continuing up into Idaho. The  $\lambda = 650$  model estimates similar slip partitioning, with some geometry differences in Walker Lane, and the  $\lambda = 1150$  model does not include activity along the Central Nevada seismic belt (Fig. 13).

This set of active structures is similar to those described by Bennett *et al.* (2003), although we do not identify active slip on the Intermountain Seismic Belt (Smith & Sbar 1974). In the reference and comparison models, no slip rates on structures in the



**Figure 13.** Slip rates and spatially variable coupling in the Basin and Range for (a)  $\lambda = 650$ , (b)  $\lambda = 850$ , (c)  $\lambda = 1150$ . Note different colour scale from previous figures to highlight low slip rate features. Coloured faults are faults that have been selected by the TVR algorithm as active and are included in each block model solution. Black faults were not selected and are not included in the block model solution. Geological slip rate constraints in coloured circles.



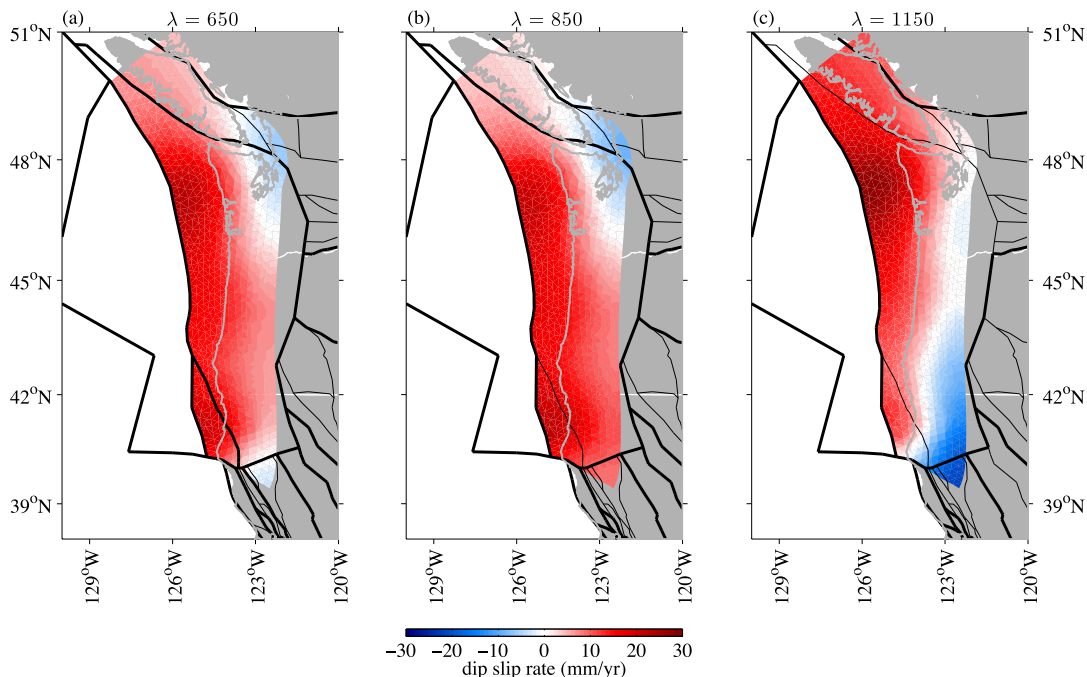
**Figure 14.** Input blocks in Basin and Range (dark lines show initial block boundaries), with selected fault labels.

interior of the Basin and Range exceed  $3 \text{ mm yr}^{-1}$ , similar to slow rates estimated by Niemi *et al.* (2004; Fig. 13). In the reference model,  $\sim 10 \text{ mm yr}^{-1}$  of right-lateral slip is transferred from the eastern California shear zone through the eastern Walker Lane fault zone, with slip rates up to  $8 \text{ mm yr}^{-1}$  in Walker Lane, somewhat higher than of total shear of  $\sim 7 \text{ mm yr}^{-1}$  (Hammond & Thatcher 2007). The more quantized comparison model of  $\lambda = 1150$  results in little deformation within Walker Lane, with  $7 \text{ mm yr}^{-1}$  of slip transferred instead from the eastern California shear zone into the Central Valley of California. Another  $1\text{--}2 \text{ mm yr}^{-1}$  of slip is accommodated on a structure in eastern Walker Lane (Fig. 13c).

At the eastern edge of the Basin and Range, the Wasatch fault is active in the reference and comparison models, and accommodates only  $2\text{--}4 \text{ mm yr}^{-1}$  of extension ( $2.8 \text{ mm yr}^{-1}$  in the reference model). The interior structure along the Central Nevada Seismic belt accommodates a similar magnitude of extension:  $0.5 \text{ mm yr}^{-1}$  near the Idaho border to  $3 \text{ mm yr}^{-1}$  in western Nevada and  $2 \text{ mm yr}^{-1}$  of strike slip. The next active fault to the east is nearly purely extensional at another  $3 \text{ mm yr}^{-1}$  of extension. In southern Nevada a roughly east–west structure accommodates no more than  $2 \text{ mm yr}^{-1}$  of extension or strike slip (Fig. 13b). These low deformation rates are consistent with the Thatcher *et al.* (1999) hypothesis that little active deformation takes place within the Basin and Range.

#### 4.2.4 Cascadia subduction and Pacific Northwest

For the full block model inversion we estimate spatially variable slip deficit rates on triangular dislocation elements representing the Cascadia subduction zone (McCrory *et al.* 2009) in addition to block rotation rates and fault slip rates (Fig. 15). In all models considered, we use a single smoothing parameter  $\beta = 1000$ . All three of the models considered fit the regional GPS observations with  $\text{MRV} < 1.7 \text{ mm yr}^{-1}$  ( $\text{MRV} = 1.6 \text{ mm yr}^{-1}$  in the reference model). We estimate slip deficit rates of up to  $22.7 \text{ mm yr}^{-1}$  on the subduction zone (Fig. 15b). This increases to  $28.2 \text{ mm yr}^{-1}$  in the  $\lambda = 1150$  model (Fig. 15c). This range is consistent with the coupling rates estimated by McCaffrey *et al.* (2007). Without modifying the smoothing parameter, the strain accumulation distribution on the subduction zone changes with the block geometry alone, and coupling rates on the subduction zone are particularly sensitive to the block geometry in the northwest Basin and Range. For example, a  $21 \text{ mm yr}^{-1}$  normal-sense patch on the southern tip of the subduction zone mesh in the  $\lambda = 1150$  model (Fig. 15c) is likely related to fewer active structures in the Basin and Range in this model.



**Figure 15.** Subduction slip deficit rates for (a)  $\lambda = 650$ , (b)  $\lambda = 850$ , (c)  $\lambda = 1150$ . Bold fault lines show faults that are included in the relevant block model, and thin black lines are faults that have been deselected. Positive subduction zone slip rates (in red) represent thrust-sense slip deficit, and negative slip rates (in blue) represent ongoing thrust-sense slip.

All slip distributions estimate the highest slip deficit rates near the trench of the subduction zone, where slip is localized in two patches centred offshore northern California at 47° N and offshore of the Olympic Peninsula at 41° N, similar to previous estimates of strain accumulation on the subduction zone (e.g. McCaffrey *et al.* 2007; McCaffrey 2009). Strain accumulation rates decay to half of the plate rate at ~30 km depth. The slip distribution in our reference model is equivalent to a moment accumulation rate of a  $M_w = 9.2$  earthquake every 600 yr, consistent with palaeoseismic and recurrence interval estimates (Goldfinger *et al.* 2003; Satake *et al.* 2003) and previous geodetic imaging within block models (McCaffrey *et al.* 2007; McCaffrey *et al.* 2013).

In the reference model ( $\lambda = 850$ ) and the  $\lambda = 650$  comparison model, we identify five actively rotating blocks in the Pacific Northwest region: the Juan de Fuca plate, a coast range block, a large oblong block spanning Vancouver Island, eastern Washington, and northern Idaho, an eastern Oregon block and a southern Oregon/northeast California/northwest Nevada block (Figs 6 and 14). At the southern edge of the subduction zone and east of the Mendocino triple-junction, four roughly sub-parallel blocks accommodate northern California deformation. In Oregon and Washington, the coast range block is the only major block between the trench and northern Basin and Range. This block is bounded on the east by the Saint Helens Seismic Zone, the West Rainier Seismic Zone and the Straits of Juan de Fuca fault (McCaffrey *et al.* 2007). The northern Basin and Range is bounded on the east by the Bitterroot and Mission faults in western Montana, and to the south by several faults along the eastern Oregon-Washington border. The eastern Oregon block is separated from the interior Basin and Range block by a string of faults in western Idaho and the Brothers fault zone in southern Oregon. The block geometry is simpler in the  $\lambda = 1150$  model, with a single coast range-northern Basin and Range block, a single Basin and Range block, and three blocks in northern California (Fig. 15c). As mentioned above, this simpler block geometry is associated with higher slip rates on the Cascadia subduction zone.

In all of the models considered in the Pacific Northwest, slip rates on block-bounding faults are low (0–5 mm yr<sup>-1</sup>; McCaffrey *et al.* 2007). Although we do not include faults in western Oregon that may accommodate additional right lateral strike-slip (e.g. McCaffrey *et al.* 2007), the lack of high fault slip rates especially in southern Oregon northern California provide negligible indications of additional deformation in this region. However, we do estimate right lateral strike-slip strain accumulation rates of 20 mm yr<sup>-1</sup> on the subduction zone just north of the Mendocino triple-junction offshore northern California and southern Oregon (Fig. S2). These high right-lateral strain accumulation rates on the subduction zone may be consistent with deformation accommodated by instead block rotations in southern Oregon (McCaffrey *et al.* 2007), but which we have not included in these models.

Misfit in the Pacific Northwest remains consistently low (MRV < 2.5 mm yr<sup>-1</sup>) up to  $\lambda = 3150$  (Fig. 5), suggesting that spatially variable slip on the subduction zone accommodates slip that is not otherwise accommodated on faults, and illustrates a trade-off between surface fault geometry and subduction zone slip. Therefore, the estimate of an initial slip distribution (Fig. 4) may contribute to final block geometries identified with the TVR algorithm. The influence of the initial slip estimate on block geometry is limited by the presence of a single coastal block over most of the subduction zone. However, active faulting in coastal Oregon and Washington not included in the initial dense block model may still map into spatially variable slip estimates on the Cascadia subduction zone.

## 5 DISCUSSION

The application of a total variation regularization (TVR) algorithm to an initially dense block model geometry allows us to identify the simplest block models that fit geodetic observations at a given resolution level. In this way, we have generated a suite of full plate boundary scale block models of the western United States by algorithmically identifying the tectonically most important block boundaries. At a residual level of 1.7 mm yr<sup>-1</sup>, plate boundary deformation can be described with 30 blocks ( $\lambda = 850$ ) in which deformation is concentrated along the San Andreas fault, San Jacinto fault, and the eastern California shear zone in southern California; the San Andreas and Calaveras systems in the San Francisco Bay Area; the Juan de Fuca plate boundary and Cascadia subduction zone in the Pacific Northwest and on discrete but low slip rate structures in the Basin and Range, as far east as the Wasatch fault.

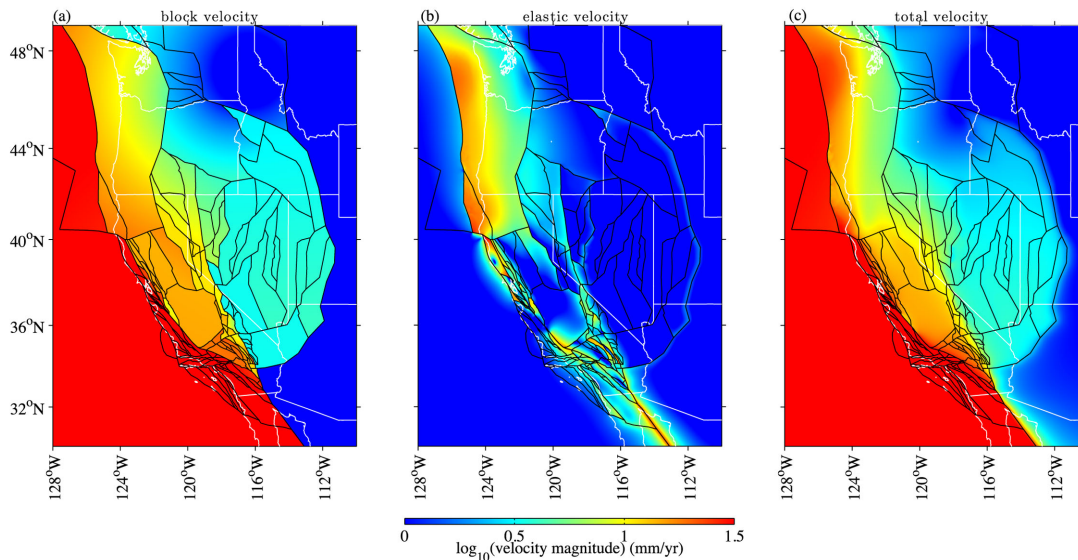
The  $\lambda = 1150$  model is the most quantized model that fits the horizontal GPS velocities with a MRV less than 2 mm yr<sup>-1</sup> (Fig. 5), providing a bound on plate boundary complexity at this level of resolution. To fit observations better than 2 mm yr<sup>-1</sup>, at > 4 mm yr<sup>-1</sup> of slip is still required west of the San Andreas fault in southern California. Furthermore, western United States plate boundary deformation cannot be described at this resolution without an active Wasatch fault. The Wasatch fault remains included in the block model selection up to an MRV = 2.4 mm yr<sup>-1</sup> ( $\lambda = 2100$ ).

The reference 30-block model, can be decomposed into velocity components due to block rotations (Fig. 16a), and velocities due to elastic strain accumulation on locked faults and the Cascadia subduction zone (Fig. 16b), and illustrates the relationship between block rotations and the final interseismic velocity field. While the final velocity field (Fig. 16b) retains large-scale block features, especially along the central San Andreas fault and in the Basin and Range, sharp block boundaries in the denser fault systems of southern California and the San Francisco Bay Area are obscured by deformation due to elastic strain accumulation. These earthquake cycle elastic effects explain how the apparently smooth deformation field across much of the western United States is well described by slip on only a subset active of possible structures.

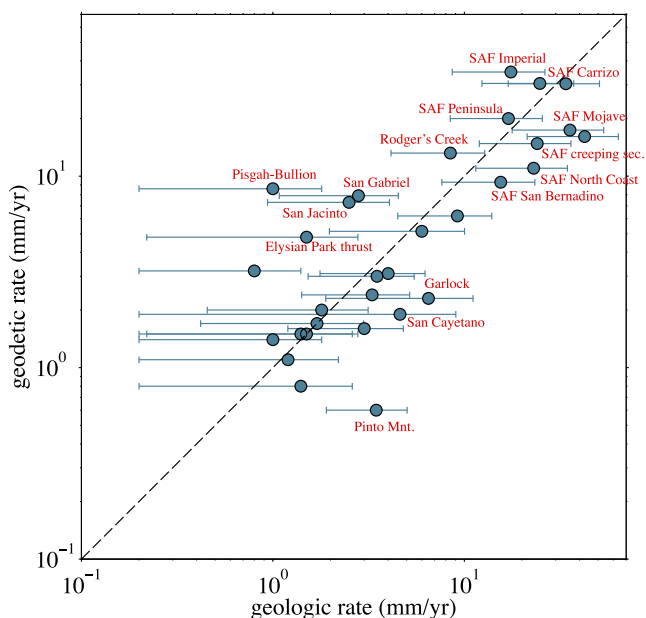
Also apparent in this decomposition are block rotations in the northeastern Basin and Range block. Here we estimate block rotations of  $0.35 \pm 0.034$  deg Ma<sup>-1</sup> about an internal Euler pole (47.19 ± 0.2°N, 116.32 ± 0.3°W). This is consistent with block rotations for the eastern Oregon block estimated by McCaffrey *et al.* (2007) of  $0.41 \pm 0.21$  deg MA<sup>-1</sup> around an Euler pole located at 45.99°N, 115.45°W for the eastern Oregon block in that study. Internal rotations like this highlight and motivate the importance of spherical block modelling approaches that avoid unnecessarily attributing rigid block rotation to internal deformation or fault slip rates and geometries.

In general, we do not observe a systematic discrepancy between the geological slip rate constraints and our jointly estimated slip rates (e.g. Meade *et al.* 2013). Of the 32 geological estimates included in the  $\lambda = 850$  reference model (on faults that remain active after TVR selection), 21 of our estimated slip rates agree within the geological uncertainty (Fig. 17). We estimate slip rates lower than the geological rate on 4 faults, and greater than the geological rate on 7 faults.

The eastern California shear zone is often cited as a region in which geological slip rates are systematically less than geodetically estimated rates (e.g. Dolan *et al.* 2007). At the geological study locations (Oskin *et al.* 2007; Oskin *et al.* 2008), we estimate slip rates of 0.6–2.0 mm yr<sup>-1</sup>, comparable to the reported



**Figure 16.** Model decomposition for  $\lambda = 850$ . (a) Forward velocities due to block rotations characterized by sharp velocity gradients at block boundaries; (b) forward velocities due to elastic strain accumulation due to faults and subduction zone slip; (c) forward velocities due to full block model in which block velocity gradients have been smoothed by contribution from elastic strain accumulation.



**Figure 17.** Comparison of geodetic and geological slip rates from the  $\lambda = 850$  reference model. Dashed black line is 1:1 line to visually compare rates. Uncertainties are the uncertainties included in the TVR estimation, not the reported uncertainties (for reported and applied uncertainties see Table S1; for details on how we have applied uncertainties, see Section 3). Selected fault labels shown in red.

geological rates of 1–1.8 mm yr<sup>-1</sup>. However, faults within 40 km of the Pisgah-Bullion fault (geological rate of 1 mm yr<sup>-1</sup>, estimated rate of 0.6 mm yr<sup>-1</sup>), reach right-lateral rates of up to 11 mm yr<sup>-1</sup> and left lateral rates of 15 mm yr<sup>-1</sup>. We interpret these short-wavelength features as due to overfitting the combined GPS and geological observations, and not representative of present-day tectonics in the eastern California shear zone.

We estimate similar short-wavelength slip rate variation in the San Francisco Bay Area. This is perhaps apparent on the San Francisco peninsula segment of the San Andreas fault. The geological slip rate on the peninsula segment is  $17 \pm 4$  mm yr<sup>-1</sup>, and we estimate a slip rate of 23 mm yr<sup>-1</sup>. This slip rate is partially accommodated by unrealistic left-lateral slip on the Zayante and San Gregorio faults to the west. This suggests that the inland Bay Area faults may not be consistent with slip rates required to allow high slip on the peninsula segment and maintain kinematic consistency across the boundary. Similarly, we estimate left lateral slip rates on the Valley Margin fault in the East Bay adjacent to the 23 mm yr<sup>-1</sup> slip rate on the creeping segment of the San Andreas fault. The San Francisco Bay Area and the eastern California shear zone are both notable for hosting several closely (<20 km) spaced strike slip faults. In these regions, the overlapping interseismic strain accumulation signals due to locking on each of these faults inevitably leads to ambiguity and trade-offs in identifying fault slip rates (e.g. Evans *et al.* 2012). At the GPS resolution and fault system density levels considered in this study, incorporating geological slip rate constraints does not necessarily resolve these ambiguities.

Furthermore, observation density appears to correspond with fault system density in the reference model. In particular, both southern California and the San Francisco Bay Area feature the densest fault systems within the reference and comparison models, which may be due to large number of GPS stations and geological slip rate constraints in both southern California (415 stations and 28 geological rates) and the Bay Area (184 stations and 7 geological rates). To mitigate this effect, we may wish to additionally reweight the observations by the inverse of their spatial density, and/or by interpreting GPS-only block models in addition to joint solutions like those performed here. Additional improvements in the TVR block modelling methodology could be made by incorporating more complex tectonic and earthquake cycle processes by allowing spatially variable creep on select faults (e.g. Evans *et al.* 2012) and by accounting for time-dependent viscoelastic deformation across the boundary (e.g. Nur & Mavko 1974; Savage & Prescott 1978; Hammond *et al.* 2011; Hearn *et al.* 2013; Johnson 2013).

## 5 CONCLUSION

The kinematic block models of the western United States developed here are based on the idea that fault slip results from the differential motion of tectonic plates. We have treated the identification of the most active of these tectonic microplates as a simultaneous part of a total variation regularization optimization strategy that maximizes the goodness-of-fit to both interseismic GPS velocities and geological slip rates, while minimizing the number of unique microplate rotation vectors. This methodology allows construction of initially spatially dense block models and then effectively answers the question: ‘How many kinematically distinct microplates (i.e. having a unique Euler pole) are required to explain the kinematic observables at a particular MRV?’ For example, a three-block model (Pacific, North America and Juan de Fuca plates) with boundaries derived from estimation with a large differential rotation vector penalty,  $\lambda$ , fits the observed GPS velocities poorly with an MRV of  $4.1 \text{ mm yr}^{-1}$ , and localizes slip along the San Andreas fault. A reference model with 30 rotating blocks fits the GPS velocities with a MRV of  $1.7 \text{ mm yr}^{-1}$ . This approach to block model selection may be improved with the inclusion of additional deformation processes (e.g. spatially variable fault creep, time-dependent viscoelastic deformation), and serves as a step towards more algorithmic analyses of both plate boundary zone kinematics and earthquake cycle deformation.

## ACKNOWLEDGEMENTS

We thank editor Saskia Goes and two anonymous reviewers for their thoughtful reviews that greatly improved the content and clarity of the manuscript. Computational resources were provided and maintained by Harvard FAS Research Computing. This research was supported by funding from Harvard University and the Southern California Earthquake Center (SCEC), proposal number 12131. SCEC is funded by National Science Foundation Cooperative Agreement EAR-0106924 and U.S. Geological Survey Cooperative Agreement 02HQAG0008.

## REFERENCES

- Bacon, C.R., Lanphere, M.A. & Champion, D.E., 1999. Late Quaternary slip rate and seismic hazards of the West Klamath Lake fault zone near Crater Lake, Oregon Cascades, *Geology*, **27**(1), 43–46.
- Bawden, G.W., Donnellan, A., Kellogg, L.H., Dong, D. & Rundle, J.B., 1997. Geodetic measurements of horizontal strain near the White Wolf fault, Kern County, California, 1926–1993, *J. geophys. Res.*, **102**(B3), 4957–4307.
- Becker, T.W., Hardebeck, J.L. & Anderson, G., 2005. Constraints on fault slip rates of the southern California plate boundary from GPS velocity and stress inversions, *Geophys. J. Int.*, **160**(2), 634–650.
- Bennett, R.A., Rodi, W. & Reilinger, R.E., 1996. Global positioning system constraints on fault slip rates in southern California and northern Baja, Mexico, *J. geophys. Res.*, **101**(B10), 21 943–21 960.
- Bennett, R.A. *et al.*, 1997. Global positioning system constraints on fault slip rates in the Death Valley region, California and Nevada, *Geophys. Res. Lett.*, **24**(23), 3073–3076.
- Bennett, R.A., Wernicke, B.P., Niemi, N.A., Friedrich, A.M. & Davis, J.L., 2003. Contemporary strain rates in the northern Basin and Range province from GPS data, *Tectonics*, **22**(2), 1008, doi:10.1029/2001TC001355.
- Bird, P., 2003. An updated digital model of plate boundaries, *Geochem. Geophys. Geosyst.*, **4**(3), 1027, doi:10.1029/2001GC000252.
- Bird, P., 2007. Uncertainties in long-term geologic offset rates of faults: general principles illustrated with data from California and other western states, *Geosphere*, **3**(6), 577–595.
- Boyd, S.P. & Vandenberghe, L., 2004. *Convex Optimization*, Cambridge Univ. Press.
- Brankman, C.M. & Shaw, J.H., 2009. Structural geometry and slip of the Palos Verdes Fault, Southern California: implications for earthquake hazards, *Bull. seism. Soc. Am.*, **99**(3), 1730–1745.
- Bürgmann, R. *et al.*, 2000. Earthquake potential along the Northern Hayward Fault, California, *Science*, **289**(5482), 1178–1182.
- Candès, E.J., Romberg, J.K. & Tao, T., 2006. Stable signal recovery from incomplete and inaccurate measurements, *Commun. Pure appl. Math.*, **59**(8), 1207–1223.
- Chambolle, A., 2004. An algorithm for total variation minimization and applications, *J. Math. Imaging Vis.*, **20**(1–2), 89–97.
- Chuang, R.Y. & Johnson, K.M., 2011. Reconciling geologic and geodetic model fault slip-rate discrepancies in Southern California: consideration of nonsteady mantle flow and lower crustal fault creep, *Geology*, **39**(7), 627–630.
- Claerbout, J. & Muir, F., 1973. Robust modeling with erratic data, *Geophysics*, **38**(5), 826–844.
- d’Alessio, M.A., Johanson, I.A., Bürgmann, R., Schmidt, D.A. & Murray, M.H., 2005. Slicing up the San Francisco Bay Area: block kinematics and fault slip rates from GPS-derived surface velocities, *J. geophys. Res.: Solid Earth* 1978–2012, **110**, B06403, doi:10.1029/2004JB003496.
- Davis, T.L., Namson, J. & Yerkes, R.F., 1989. A cross-section of the Los Angeles area—seismically active fold and thrust belt, the 1987 Whittier-Narrows Earthquake, and earthquake hazard, *J. geophys. Res.*, **94**(B7), 9644–9664.
- Dawson, T.E. & Weldon, R.J. III, 2013. Appendix B: geologic slip rate data and geologic deformation model, *U.S. Geol. Surv. Open-File Rept., 2013–1165-B, and California Geol. Surv. Special Rept., 228-B*.
- DeMets, C., Gordon, R.G., Argus, D.F. & Stein, S., 1990. Current plate motions, *Geophys. J. Int.*, **101**(2), 425–478.
- Dolan, J.F., Bowman, D.D. & Sammis, C.G., 2007. Long-range and long-term fault interactions in Southern California, *Geology*, **35**(9), 855–858.
- Donoho, D.L., 2006. For most large underdetermined systems of linear equations the minimal  $\ell_1$ -norm solution is also the sparsest solution, *Commun. Pure appl. Math.*, **59**(6), 797–829.
- Evans, E.L. & Meade, B.J., 2012. Geodetic imaging of coseismic slip and postseismic afterslip: sparsity promoting methods applied to the great Tohoku earthquake, *Geophys. Res. Lett.*, **39**(11), doi:10.1029/2012GL051990.
- Evans, E.L., Loveless, J.P. & Meade, B.J., 2012. Geodetic constraints on San Francisco Bay Area fault slip rates and potential seismogenic asperities on the partially creeping Hayward fault, *J. geophys. Res.: Solid Earth* 1978–2012, **117**(B3), doi:10.1029/2011JB008398.
- Fialko, Y., 2006. Interseismic strain accumulation and the earthquake potential on the southern San Andreas fault system, *Nature*, **441**(7096), 968–971.
- Gan, W., Svarc, J.L. & Savage, J.C., 2000. Strain accumulation across the Eastern California Shear Zone at latitude  $36^\circ 30' \text{ N}$ , *J. geophys. Res.*, **105**(B7), 16 299–16 236.
- Gold, R.D., Cowgill, E., Arrowsmith, J.R., Gosse, J., Chen, X. & Wang, X.-F., 2009. Riser diachroneity, lateral erosion, and uncertainty in rates of strike-slip faulting: a case study from Tuzidun along the Altyn Tagh Fault, NW China, *J. geophys. Res.: Solid Earth.*, **114**, B04401, doi:10.1029/2008JB005913.
- Goldfinger, C., Nelson, C.H., Johnson, J.E. & Party, S.S., 2003. Holocene earthquake records from the Cascadia subduction zone and northern San Andreas Fault based on precise dating of offshore turbidites, *Ann. Rev. Earth planet. Sci.*, **31**(1), 555–577.
- Hammond, W.C. & Thatcher, W., 2005. Northwest basin and range tectonic deformation observed with the global positioning system, 1999–2003, *J. geophys. Res.*, **110**(B10), doi:10.1029/2005JB003678.
- Hammond, W.C. & Thatcher, W., 2007. Crustal deformation across the Sierra Nevada, northern Walker Lane, Basin and Range transition, western United States measured with GPS, 2000–2004, *J. geophys. Res.: Solid Earth*, **112**(B5), doi:10.1029/2006JB004625.
- Hammond, W.C., Blewitt, G. & Kreemer, C., 2011. Block modeling of crustal deformation of the northern Walker Lane and Basin and

- Range from GPS velocities, *J. geophys. Res.: Solid Earth*, **116**(B4), doi:10.1029/2010JB007817.
- Hearn, E.H., Pollitz, F.F., Thatcher, W.R. & Onishi, C.T., 2013. How do “ghost transients” from past earthquakes affect GPS slip rate estimates on southern California faults?, *Geochem. Geophys. Geosyst.*, **14**, 828–838.
- Hubbard, J., Shaw, J.H., Dolan, J., Pratt, T.L., McAuliffe, L. & Rockwell, T.K., 2014. Structure and seismic hazard of the ventura avenue anticline and Ventura Fault, California: prospect for large, multisegment ruptures in the Western Transverse Ranges, *Bull. seism. Soc. Am.*, **104**(3), 1070–1087.
- Jennings, C.W., 1994. Fault activity map of California and adjacent areas with locations and ages of recent volcanic eruptions, California Department of Conservation, Division of Mines and Geology Data Map Series No. 6, 92 p., 2 plates, map scale 1:750,000.
- Jensen, T.L., Jorgensen, J.H., Hansen, P.C. & Jensen, S.H., 2012. Implementation of an optimal first-order method for strongly convex total variation regularization, *Bit Numer. Math.*, **52**(2), 329–356.
- Jewell, P.W. & Bruhn, R.L., 2013. Evaluation of Wasatch fault segmentation and slip rates using Lake Bonneville shorelines, *J. geophys. Res.: Solid Earth*, **118**(5), 2528–2543.
- Johnson, K.M., 2013. Slip rates and off-fault deformation in Southern California inferred from GPS data and models, *J. geophys. Res.: Solid Earth*, **118**(10), 5643–5664.
- Johnson, K.M. & Fukuda, J., 2010. New methods for estimating the spatial distribution of locked asperities and stress-driven interseismic creep on faults with application to the San Francisco Bay Area, California, *J. geophys. Res.: Solid Earth 1978–2012*, **115**(B12), B12408, doi:10.1029/2010JB007703.
- Leon, L.A., Christofferson, S.A., Dolan, J.F., Shaw, J.H. & Pratt, T.L., 2007. Earthquake-by-earthquake fold growth above the Puente Hills blind thrust fault, Los Angeles, California: implications for fold kinematics and seismic hazard, *J. geophys. Res.: Solid Earth (1978–2012)*, **112**(B3), doi:10.1029/2006JB004461.
- Leon, L.A., Dolan, J.F., Shaw, J.H. & Pratt, T.L., 2009. Evidence for large Holocene earthquakes on the Compton thrust fault, Los Angeles, California, *J. geophys. Res.*, **114**(B12), doi:10.1029/2008JB006129.
- Lindsey, E.O., Sahakian, V.J., Fialko, Y., Bock, Y., Barbot, S. & Rockwell, T.K., 2013. Interseismic strain localization in the San Jacinto fault zone, *Pure appl. Geophys.*, **171**, 2937–2954.
- Lisowski, M., Savage, J.C. & Prescott, W.H., 1991. The velocity field along the San Andreas Fault in central and southern California, *J. geophys. Res.: Solid Earth 1978–2012*, **96**(B5), 8369–8389.
- Loveless, J.P. & Meade, B.J., 2011. Stress modulation on the San Andreas fault by interseismic fault system interactions, *Geology*, **39**(11), 1035–1038.
- Lundgren, P., Hetland, E.A., Liu, Z. & Fielding, E.J., 2009. Southern San Andreas-San Jacinto fault system slip rates estimated from earthquake cycle models constrained by GPS and interferometric synthetic aperture radar observations, *J. geophys. Res.: Solid Earth 1978–2012*, **114**(B2), B02403, doi:10.1029/2008JB005996.
- Matsu'ura, M., Jackson, D.D. & Cheng, A., 1986. Dislocation model for aseismic crustal deformation at Hollister, California, *J. geophys. Res.*, **91**(B12), 2661–2674.
- McCaffrey, R., 2005. Block kinematics of the Pacific-North America plate boundary in the southwestern United States from inversion of GPS, seismological, and geologic data, *J. geophys. Res.*, **110**(B7), doi:10.1029/2004JB003307.
- McCaffrey, R., 2009. Time-dependent inversion of three-component continuous GPS for steady and transient sources in northern Cascadia, *Geophys. Res. Lett.*, **36**(7), L07304, doi:10.1029/2008GL036784.
- McCaffrey, R. *et al.*, 2007. Fault locking, block rotation and crustal deformation in the Pacific Northwest, *Geophys. J. Int.*, **169**(3), 1315–1340.
- McCaffrey, R., King, R.W., Payne, S.J. & Lancaster, 2013. Active tectonics of northwestern U.S. inferred from GPS-derived surface velocities, *J. geophys. Res.*, **118**(2), 709–723.
- McClusky, S.C. *et al.*, 2001. Present day kinematics of the Eastern California Shear Zone from a geodetically constrained block model, *Geophys. Res. Lett.*, **28**(17), 3369–3372.
- McCrorry, P.A., Blair, J.L., Oppenheimer, D.H. & Walter, S.R., 2009. Depth to the Juan de Fuca slab beneath the Cascadia subduction margin—a 3-D model sorting earthquakes, *U.S. Geological Survey Data Series 91*, Version 1.2.
- McQuarrie, N. & Wernicke, B.P., 2005. An animated tectonic reconstruction of southwestern North America since 36 Ma, *Geosphere*, **1**(3), 147–172.
- Meade, B.J., 2007. Algorithms for the calculation of exact displacements, strains, and stresses for triangular dislocation elements in a uniform elastic half space, *Comput. Geosci.*, **33**(8), 1064–1075.
- Meade, B.J. & Hager, B.H., 2005. Block models of crustal motion in southern California constrained by GPS measurements, *J. geophys. Res.: Solid Earth 1978–2012*, **110**(B3), doi:10.1029/2004JB003209.
- Meade, B.J. & Loveless, J.P., 2009. Block modeling with connected fault-network geometries and a linear elastic coupling estimator in spherical coordinates, *Bull. seism. Soc. Am.*, **99**(6), 3124–3139.
- Meade, B.J., Klinger, Y. & Hetland, E.A., 2013. Inference of multiple earthquake-cycle relaxation timescales from irregular geodetic sampling of interseismic deformation, *Bull. seism. Soc. Am.*, **103**(5), 2824–2835.
- Miller, M.M., Johnson, D.J., Rubin, C.M., Dragert, H., Wang, K., Qamar, A. & Goldfinger, C., 2001. GPS-determination of along-strike variation in Cascadia margin kinematics: implications for relative plate motion, subduction zone coupling, and permanent deformation, *Tectonics*, **20**(2), 161–176.
- Minster, J.B. & Jordan, T.H., 1987. Vector constraints on Western United-States deformation from space geodesy, neotectonics, and plate motions, *J. geophys. Res.*, **92**(B6), 4798–4804.
- Murray, J. & Langbein, J., 2006. Slip on the San Andreas Fault at Parkfield, California, over two earthquake cycles, and the implications for seismic hazard, *Bull. seism. Soc. Am.*, **96**(4B), S283–S303.
- Murray, M.H. & Segall, P., 2001. Modeling broadscale deformation in northern California and Nevada from plate motions and elastic strain accumulation, *Geophys. Res. Lett.*, **28**(22), 3215–3218.
- Niemi, N.A., Wernicke, B.P., Friedrich, A.M., Simons, M., Bennett, R.A. & Davis, J.L., 2004. BARGEN continuous GPS data across the eastern Basin and Range province, and implications for fault system dynamics, *Geophys. J. Int.*, **159**(3), 842–862.
- Nur, A. & Mavko, G., 1974. Postseismic viscoelastic rebound, *Science*, **183**(4121), 204–206.
- Oskin, M. & Iriondo, A., 2004. Large-magnitude transient strain accumulation on the Blackwater fault, Eastern California shear zone, *Geology*, **32**(4), 313–316.
- Oskin, M., Perg, L., Blumentritt, D., Mukhopadhyay, S. & Iriondo, A., 2007. Slip rate of the Calico fault: implications for geologic versus geodetic rate discrepancy in the Eastern California Shear Zone, *J. geophys. Res.*, **112**(B3), doi:10.1029/2006JB004451.
- Oskin, M., Perg, L., Shelef, E., Strane, M., Gurney, E., Singer, B. & Zhang, X., 2008. Elevated shear zone loading rate during an earthquake cluster in eastern California, *Geology*, **36**(6), 507–510.
- Peltzer, G., Crampe, F., Hensley, S. & Rosen, P., 2001. Transient strain accumulation and fault interaction in the Eastern California shear zone, *Geology*, **29**(11), 975–978.
- Rudin, L.I., Osher, S. & Fatemi, E., 1992. Nonlinear total variation based noise removal algorithms, *Phys. D: Nonlin. Phenom.*, **60**(1–4), 259–268.
- Santosa, F. & Symes, W., 1986. Linear Inversion of Band-Limited Reflection Seismograms, *SIAM J. Sci. Stat. Comput.*, **7**(4), 1307–1330.
- Satake, K., Wang, K.L. & Atwater, B.F., 2003. Fault slip and seismic moment of the 1700 Cascadia earthquake inferred from Japanese tsunami descriptions, *J. geophys. Res.*, **108**(B11), doi:10.1029/2003JB002521.
- Savage, J.C. & Burford, R.O., 1973. Geodetic Determination of Relative Plate Motion in Central California, *J. geophys. Res.*, **78**(5), 832–845.
- Savage, J.C. & Prescott, W.H., 1978. Asthenosphere readjustment and the earthquake cycle, *J. geophys. Res.: Solid Earth*, **83**(B7), doi:10.1029/JB083iB07p03369.
- Savage, J.C. & Simpson, R.W., 2013. Clustering of GPS velocities in the Mojave Block, southeastern California, *J. geophys. Res.: Solid Earth*, **118**(B4), doi:10.1029/2012JB009699.

- Savage, J.C., Gan, W. & Svarc, J.L., 2001. Strain accumulation and rotation in the Eastern California Shear Zone, *J. geophys. Res.: Solid Earth*, **106**(B10), doi:10.1029/2000JB000127.
- Schmidt, D.A., Bürgmann, R., Nadeau, R.M. & d'Alessio, M., 2005. Distribution of aseismic slip rate on the Hayward fault inferred from seismic and geodetic data, *J. geophys. Res.: Solid Earth 1978–2012*, **110**(B8), doi:10.1029/2004JB003397.
- Sella, G.F., Dixon, T.H. & Mao, A.L., 2002. REVEL: a model for recent plate velocities from space geodesy, *J. geophys. Res.*, **107**(B4), ETG11–ETG30.
- Shaw, J.H., Bischke, R.E. & Suppe, J., 1994. Relations between folding and faulting in the Loma Prieta epicentral zone: Strike-slip fault-bend folding, in the Loma Prieta, California, Earthquake of October 17, 1989, edited by Simpson, R.W., U.S. Geological Survey Professional Paper 1550-F, 131 p.
- Shen, Z.K. *et al.*, 2003. SCEC crustal motion map, version 3.0: <http://epicenter.usc.edu/cmm3>, last accessed November 2011.
- Simpson, G.D., Baldwin, J.N., Kelson, K.I. & Lettis, W.R., 1999. Late Holocene slip rate and earthquake history for the northern Calaveras fault at Welch Creek, eastern San Francisco Bay area, California, *Bull. seism. Soc. Am.*, **89**(5), 1250–1263.
- Simpson, R.W. & Thatcher, W., 2012. Using cluster analysis to organize and explore regional GPS velocities, *Geophys. Res. Lett.*, **39**(18), doi:10.1029/2012GL052755.
- Smith, R.B. & Sbar, M.L., 1974. Contemporary tectonics and seismicity of the Western United States with emphasis on the Intermountain Seismic Belt, *Geol. Soc. Am. Bull.*, **85**(8), 1205–1218.
- Souter, B.J., 1998. Comparisons of geologic models to GPS observations in southern California, *PhD thesis*, Massachusetts Institute of Technology, Cambridge, MA.
- Spinler, J.C., Bennett, R.A., Anderson, M.L., McGill, S.F., Hreinsdóttir, S. & McCallister, A., 2010. Present-day strain accumulation and slip rates associated with southern San Andreas and eastern California shear zone faults, *J. geophys. Res.*, **115**(B11), doi:10.1029/2010JB007424.
- Stewart, J.H., 1988. Tectonics of the Walker Lane belt, western Great Basin: Mesozoic and Cenozoic deformation in a zone of shear, in *Metamorphism and Crustal Evolution of the Western United States*, Rubey, Vol. VII, pp. 684–713, ed. Ernst, W.G., Prentice-Hall.
- Thatcher, W., Foulger, G.R., Julian, B.R., Svarc, J., Quilty, E. & Bawden, G.W., 1999. Present-day deformation across the basin and range province, western United States, *Science*, **283**(5408), 1714–1718.
- Toké, N.A. *et al.*, 2011. Late Holocene slip rate of the San Andreas fault and its accommodation by creep and moderate-magnitude earthquakes at Parkfield, California, *Geology*, **39**(3), 243–246.
- U.S. Geological Survey, Arizona Geological Survey, California Geological Survey, Colorado Geological Survey, Idaho Geological Survey, Montana Bureau of Mines and Geology, Nevada Bureau of Mines and Geology, New Mexico Bureau of Mines and Mineral Resources, Utah Geological Survey, 2006. Quaternary fault and fold database for the United States. Tech. Rep., U.S. Geological Survey.
- Wallace, R.E., 1984. Patterns and timing of late Quaternary faulting in the Great Basin Province and relation to some regional tectonic features, *J. geophys. Res.*, **89**(B7), 5763–5769.
- Weldon, R. & Humphreys, E., 1986. A Kinematic model of southern California, *Tectonics*, **5**(1), 33–48.
- Wesnousky, S.G., 2005. Active faulting in the Walker Lane. *Tectonics*, **24**(3), doi:10.1029/2004TC001645.
- Williams, T.B., Kelsey, H.M. & Freymueller, J.T., 2006. GPS-derived strain in northwestern California: Termination of the San Andreas fault system and convergence of the Sierra Nevada-Great Valley block contribute to southern Cascadia forearc contraction, *Tectonophysics*, **413**(3–4), 171–184.
- Yao, H., Gerstoft, P., Shearer, P.M. & Mecklenbräuker, C., 2011. Compressive sensing of the Tohoku-Oki Mw 9.0 earthquake: Frequency-dependent rupture modes, *Geophys. Res. Lett.*, **38**(20), doi:10.1029/2011GL049223.
- Zechar, J.D. & Frankel, K.L., 2009. Incorporating and reporting uncertainties in fault slip rates, *J. geophys. Res.: Solid Earth*, **114**, B12407, doi:10.1029/2009JB006325.

## SUPPORTING INFORMATION

Additional Supporting Information may be found in the online version of this paper:

**Figure S1.** Residual velocities for the end member model solution,  $\lambda = 3150$ . Residual velocity vectors are coloured by residual velocity magnitude.

**Figure S2.** Strike slip rates estimated on the Cascadia subduction zone for (a)  $\lambda = 650$ , (b)  $\lambda = 850$ , (c)  $\lambda = 1150$ . Bold fault lines show fault that are included in the relevant block model, and thin black lines are faults that have been deselected. Positive slip values (in red) represent left-lateral slip, and negative slip values (in blue) represent right-lateral slip.

**Table S1.** Geological rates used in the TVR estimation and final block model solution.

(<http://gji.oxfordjournals.org/lookup/suppl/doi:10.1093/gji/ggv164/-/DC1>).

Please note: Oxford University Press is not responsible for the content or functionality of any supporting materials supplied by the authors. Any queries (other than missing material) should be directed to the corresponding author for the paper.